



THE MONTEBELLO

AMENITIES LIST:

INTERIOR

Hardwood all downstairs
Large oversized garage
Free-standing tub
Hand-held sprayer in Master shower
Handicap friendly design
LED stair lights
Kwikset hardware
Custom-built cabinets
Tech Shield decking

SAFETY FEATURES

Fully operational security system & 2 keypads
10-year structural warranty

APPLIANCE PACKAGE

Tankless water heater (2) when applicable
Carrier HVAC with 7-day programmable thermostat
Insulated garage door with external keypad

EXTERIOR

Screens on all operable windows
Ridge vent roofing with 30-year architectural shingles
James Hardie exterior w/40-year limited warranty)
20-year limited warranty Sherwin Williams Super Paint



SSHINFO.com

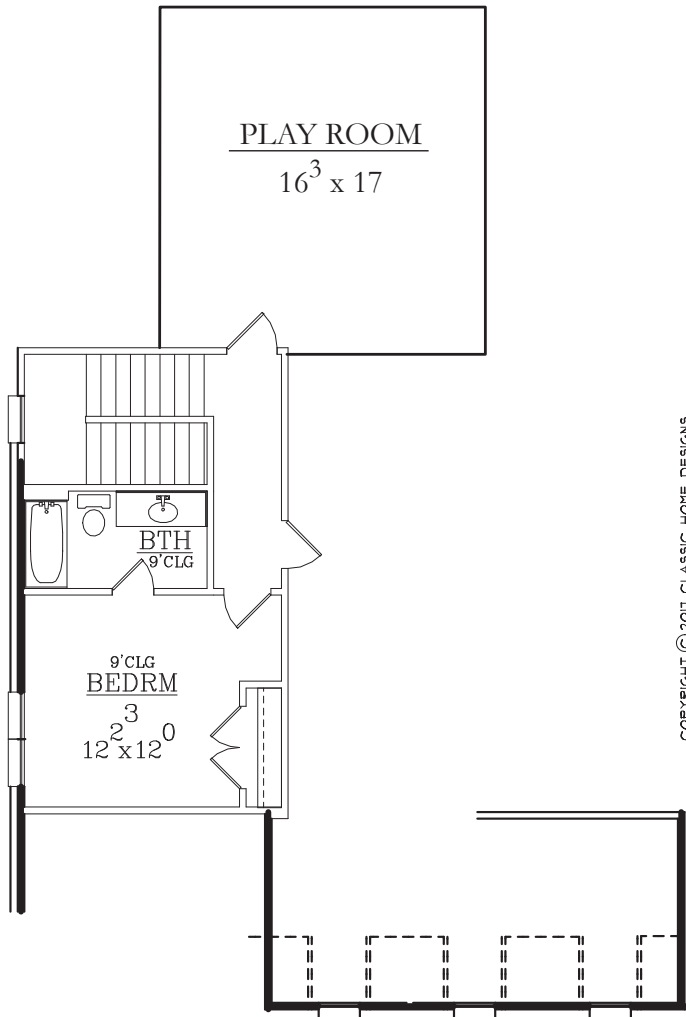
290 Pierce Road
Oakland, TN 38060
(901) 466-1991



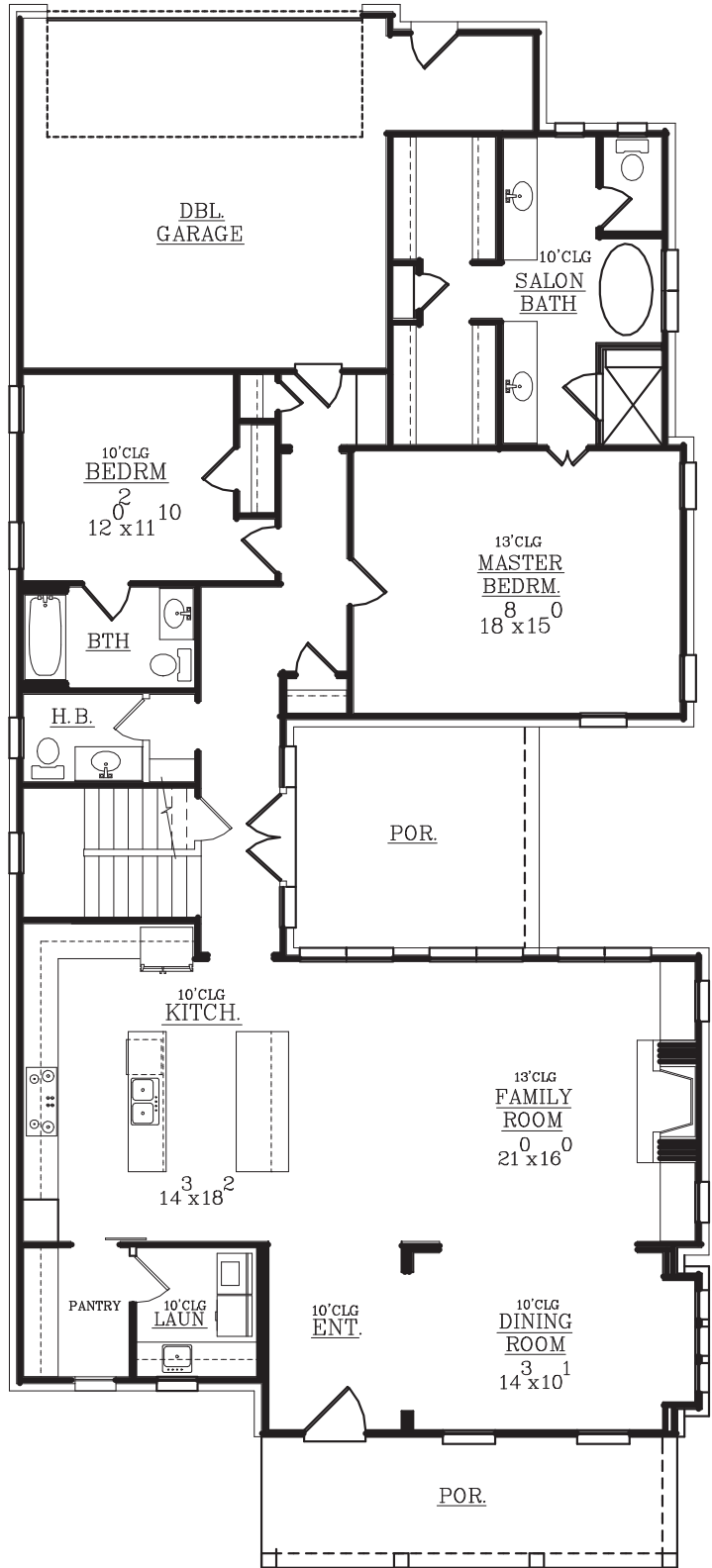
THE MONTEBELLO

Htd Dn 2085 SF
 Htd Up 730 SF
 Total Htd 2895 SF

Gar & Stor 490 SF
 Porches 268 SF



COPYRIGHT © 2011 CLASSIC HOME DESIGNS



NOTE:
 Indicated square footages are approximate and may not reflect the actual square footage as built. This is an architectural rendering intended for informational purposes only. All specifications are subject to change without notice.



SSHINFO.com

